



About the Conference

The AngelAfrica Enterprise Conference is an annual event which brings together a diverse group of professionals to discuss innovations and opportunities in private sector investment, economic development and entrepreneurship on the African continent.

2009 Program

A thriving, vibrant business environment, coupled with a commitment to achieve positive social impact, is paramount to sustainable economic development, innovation, and long lasting prosperity throughout Africa.

The 2009 conference will jointly showcase leadership and innovation in Africa's private and social sectors. Day one will consist of the West Africa Investment Forum (WAIF) and day two will be the Africa Social Enterprise Forum (ASEF).

Conference Details

Dates:

Friday, September 25, 2009 - West Africa Investment Forum (WAIF)

Saturday, September 26, 2009 - Africa Social Enterprise Forum (ASEF)

Location:

Desmond Tutu Center
180 Tenth Avenue
New York, NY 10011

Registration:

<https://www.regonline.com/AAEC>

Friday, September 25:	Saturday, September 26:
<p>The West Africa Investment Forum (WAIF) will build upon the success of AngelAfrica's 2008 Inaugural Investment Forum (co-sponsored by the New York Society of Securities Analysts) which focused on the business climate and investment opportunities in the East Africa Community (EAC) regional economic block. This year, the focus will be on the Economic Community of West African States (ECOWAS).</p>	<p>The Africa Social Enterprise Forum (ASEF) will be the first event of this scale to focus exclusively on social entrepreneurship in Africa. In our view, social enterprise is about business, innovation, and positive social change; NOT charity. ASEF seeks to empower existing and aspiring social entrepreneurs to develop innovative solutions to Africa's most pressing social issues.</p>

2009 conference delegates will include:

- Multinational corporations' executives
- Investment and development bankers
- Venture capitalists
- Private equity firms
- Institutional investors
- Social entrepreneurs
- Social investors
- Development agencies
- Private foundations
- Equity brokers
- Business development consultants
- Students
- Various other members of AngelAfrica's extensive network of **~400 young professionals in NYC**



Agenda*: West Africa Investment Forum - Friday, September 25, 2009	
8.00 am-8.30 am	Registration Continental Breakfast
8.30 am-8.35 am	Welcome & Introductory Remarks Conference Moderator: Scott Schuster
8.35 am-10:05 am	<p><u>Banking</u> Perspectives on West African banking sector: What's next?</p> <p>Presentation: -Ecobank 40 minutes of presentation & Q & A</p> <p>-5 minutes break-</p> <p>Panel Discussion & Q & A: -Banque Atlantique: Christiane Agkpo – Head of Corporate Finance -United Bank of Africa: Gboyega Festus – Head of International Business Banking -Instrat: Okey Okuzu – Founder/ CEO</p>
10:05 am-10:20 am	Networking Break
10:20 am -11:50 am	<p><u>Agribusiness</u> Climbing up the value chain success stories</p> <p>Presentation: -Aventura Investment Partners Dawn Hines - Co-founder & Partner 40 minutes of presentation & Q & A</p> <p>-5 minutes break-</p> <p>Presentation: -Adina World Beverages/ Tiassano Tribe Inc. Magatte Wade - Founder 40 minutes of presentation & Q & A</p>
11:50 am-1:00 pm	Lunch Break (on your own)

1:00 pm-2:30 pm	<p><u>ICT</u> Innovative technologies and business development in West Africa: what can we expect?</p> <p>Presentation: -AfricXpress Nvalaye Kouroma – CEO 40 minutes of presentation & Q & A</p> <p>-5 minutes break-</p> <p>Panel Discussion & Q & A: -Ghana Internet Service Provider Association (GISPA): Eric Osiakwan –Founder, -IBM: Dr. Hagen Wenzek – Corporate Strategy -E+CO: Anne Murray, Senior Development Officer</p>
2:30 pm-2:45 pm	Networking Break
2.45 pm-3:15 pm	<p><u>Capital Markets Development /Private Equity</u> Investments and Opportunities in West Africa</p> <p>Presentation: 40 minutes of presentation & Q & A</p> <p>-5 minutes break-</p> <p>Panel Discussion & Q & A: -Exotix USA: Ashley Bendell – Associate Director -MFX Solutions: Jorge Santisteban – Director of Hedging Services</p>
3:15 pm-3:30 pm	Networking Break
3:30 pm-4:30 pm	Closing
5:00pm-7:00pm	Networking Reception (Location TBA)

**Agendas are subject to change. Check back for updates.*



Agenda*: Africa Social Enterprise Forum - Saturday, September 26, 2009	
7:30 am to 8:30 am	Registration & Continental Breakfast (Pre-function Room, Floor 1)
8:30 am to 9:30 am	<p>Opening Plenary (Matthews Room, Floor 1)</p> <p>Welcome AngelAfrica</p> <p>Opening Remarks Bill Carter, Vice President for Africa Programs, Ashoka</p> <p>Keynote Address Craig Newmark, Founder, Craigslist</p>
9:30 am to 10:00 am	Networking Break
10:00 am to 11:15 am	<p>Concurrent Morning Breakouts:</p> <p>The Making of a Social Entrepreneur (Remer Room, Floor 2) - A “how to” conversation with those who have recently taken the leap into social entrepreneurship in Africa - A discussion of the various characteristics that make a social entrepreneur successful</p> <p>Moderator: Leila Chirayath Janah, Founder, Samasource</p> <p>Panelists: - Fred Swaniker, Founder & CEO, African Leadership Academy - Scott Clarke, Founding Director, Amandla Development - Elizabeth Scharpf, Founder, SHE: Sustainable Health Enterprises - Linda Jenkinson, Founder & CEO, WOW - Ella Gorgla, Managing Partner, The Khana Group</p> <p>Social Enterprise Financing Roundtable (Matthews Room, Floor 1) - Comparative review of various financing models</p> <p>Moderator: Kojo Parris, Founder & CEO, Social Private Equity South Africa and Chairman, African Social Entrepreneurs Network</p> <p>Panelists: - Omer Imtiazuddin, Health Portfolio Manager, Acumen Fund - Nii Simmonds, Co-founder, Afrobotics - Dawn Hines, Co-founder & Partner, Aventura Investment Partners - John Simon, Visiting Fellow, Center for Global Development and Former US Ambassador to the African Union - Christine Phillpotts, Portfolio Manager, Grassroots Business Fund - Antony Bugg-Levine, Managing Director, Rockefeller Foundation</p> <p>Case Study Workshop: Marang House - South Africa (Sacristans Room, Floor 4) Facilitator: Dr. Ellen McGrath, Founder & President Bridge Coaching Institute, Clinical Psychologist Presenter: Pieter Ernst Jr, Executive Director of Marang House</p> <p>Speed Mentoring (Pre-function Room, Floor 1)</p>

11:15 am to 11:30 am	Networking Break Enterprise Lounge opens (Russack Room, Floor 1)
11:30 am to 12:30 pm	Lunch (Bottino Restaurant, 246 Tenth Avenue, \$18 prix fixe) Speed Mentoring (Pre-function Room, Floor 1)
12:45 pm to 2:00 pm	<p>Concurrent Afternoon Breakouts:</p> <p>Structural & Legal Considerations (Matthews Room, Floor 1) - Structural considerations for African social enterprises: nonprofit, for-profit and hybrid models - Navigating the legal and regulatory environment in Africa</p> <p>Moderator: Elchi Nowrojee, Director & Counsel, Alternative Investments, Credit Suisse Securities Panelists: - Matthew T. Mitro, Founder & President, Indego Africa - Chid Liberty, CEO, Sustainable Global Sourcing - Nick Sowden, Director of Business Development, ToughStuff - Jacqueline Muna Musiitwa, Founder, Transitional Trade</p> <p>Due Diligence & Scaling Up (Remer Room, Floor 2) - Diligence best practices for African-interest social investors and enterprises looking to scale up - Lessons learned in screening partners, clients and social ventures in Africa</p> <p>Moderator: Cindy Ko, Director of International Expansion, Endeavor Panelists: - Santhosh Ramdoss, Program Manager, BRAC USA - Alicia Polak, Founder & CEO, Khaya Cookies - Donna Katzin, Executive Director, Shared Interest - Jacob Lief, President & Founder, Ubuntu Education Fund - Peter Eliassen, Vice President, VisionSpring</p> <p>Case Study Workshop: E+Co Portfolio Company, WilkinSolar -Ghana (Sacristans Room, Floor 4) Facilitator: Dr. Jeffrey A. Robinson, Assistant Professor of Management and Entrepreneurship, Rutgers Business School Presenter: Anne Murray, Senior Development Officer, E+Co</p> <p>Speed Mentoring (Pre-function Room, Floor 1)</p>
2:00 pm to 2:15 pm	Networking Break
2:15 pm to 2:30 pm	Presentation: 2010 Social Venture Competition (Matthews Room, Floor 1) Speed Mentoring (Pre-function Room, Floor 1)
2:30 pm to 3:30 pm	Closing Plenary (Matthews Room, Floor 1) Keynote Address
4:30 pm to 7:30 pm	Networking Reception & Afterparty <i>Sponsored by Starr African Rum</i> (Location TBA)

*Agendas are subject to change. Check back for updates.

ASEF Special Highlights:

- Join us in the Enterprise Lounge, a buzzing, high energy area for social enterprise networking and information sharing! The Lounge will include exhibition tables for social entrepreneurs. Showcase your idea or existing venture to conference attendees and leading social investors. SPACE IS LIMITED. Email 2009asef@gmail.com for more information.
- Seeking expert advice on your social venture or idea? Participate in our “speed mentoring” program! Schedule a 10 minute appointment at ASEF with an experienced professional and get real-time feedback. Email 2009asef@gmail.com for more information.



Photo courtesy Benjamin Stone, copyright Indego Africa

How Can You Participate in the 2009 Enterprise Conference?

Attend the event:

Join more than 250 conference attendees and representatives of over \$4 billion in public and private sector investment capital at the event.

Online registration now open: <https://www.regonline.com/AAEC>

Sponsor the Event

Full Conference Pass (Sep 25 & 26)		Single Day Pass (WAIF Sep 25 or ASEF Sep 26)	
Professional rate	\$175.00	Professional rate	\$110.00
Early bird rate (ends September 11)	\$149.00	Early bird rate (ends September 11)	\$99.00
Student rate (must show valid ID)	\$100.00	Student rate (must show valid ID)	\$60.00

There are several opportunities for companies and individuals to become a corporate sponsor or investor for the 2009 AngelAfrica Enterprise Conference!

In light of the current economic downturn, we are offering significantly reduced sponsorship rates. Reach more than 250 individuals with packages beginning at just \$500 for corporate sponsors and \$50 for investors. 100% of net proceeds will benefit AngelAfrica, a 501c3 nonprofit organization.

Exhibit in the Enterprise Lounge (ASEF only)

Enterprise Lounge Exhibitor fee: \$100 (includes complimentary single day pass to ASEF)

Benefits include:

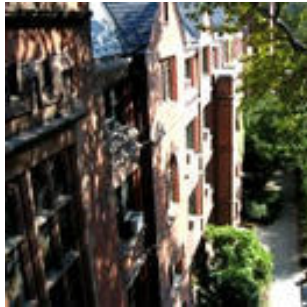
- 5' table in Enterprise Lounge (Russack Room, Floor 1)
- Opportunity to sell/showcase products
- Distribution of unlimited promotional materials
- Opportunity to collect business cards

Become an In-Kind or Marketing Partner

Have a product you would like share? Provide a gift of choice for conference attendees in our gift bags.

Want to help us spread the word about the AngelAfrica Enterprise Conference while reaching a new audience? Become a marketing partner!

Contact us at 2009aaec@gmail.com to discuss your participation!



VENUE INFORMATION

Desmond Tutu Center

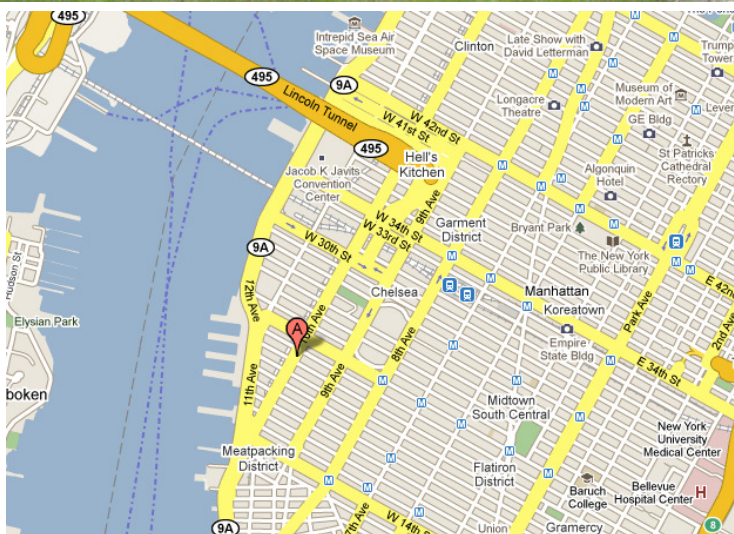
180 10th Avenue (between 20th & 21st Streets)

New York, NY 10011



The Desmond Tutu Center is a unique new address for business in New York City. This innovative Center combines charming 19th-century Gothic architecture with sophisticated 21st-century comforts. Beautifully restored historic guest accommodations and a park-like setting create a refreshing retreat in the heart of the city's vibrant Chelsea neighborhood.

The Center is named in honor of Archbishop Desmond Tutu, a tireless activist for peace and social justice, who has been awarded the Nobel Peace Prize, the Albert Schweitzer Prize for Humanitarianism, the Magubela Prize for Liberty and the Gandhi Peace Prize.



Map of Desmond Tutu Center

DIRECTIONS

By Subway:

1, 2, 3 – Direction South Ferry Station

Start: 34th St Penn Station

Stop: 23rd Street station

- Walk:
1. Head northwest on W 23rd St towards 8th Avenue
 2. Turn Left at 10th Ave
 3. Arrive at 180 10th Ave, destination will be on the left.

C, E – Direction Euclid Ave Station

Start: 34th St Penn Station

Stop: 23rd Street Station

- Walk:
1. Head northwest on W 23rd St towards 9th Avenue
 2. Turn Left at 10th Ave
 3. Arrive at 180 10th Ave; destination will be on the left.

By Car:

From JFK Airport

Follow the signs to the Van Wyck Expressway (687 North) and take it to the Grand Central Parkway West. Take the Grand Central Parkway West and exit at Long Island Expressway (LIE) (495 West, Midtown Tunnel). Merge onto I-495 West exit 10w on the left. Keep left at the fork in the ramp. Stay straight to go onto the Queens Midtown Tunnel Exit. Turn right onto E 34th Street. Turn left onto 9th Avenue. Turn right onto W19th Street. Turn Right onto 10th Avenue. END: 180 10th Avenue.

From La Guardia Airport:

Follow the signs to Grand Central Parkway West towards Parkway West/Manhattan. Take the Brooklyn-Queens Expressway (I-278 W) towards Verrazano Narrows Br., exit 4. Continue on the Brooklyn Queens Expy East ramp. Then take the I-278 West exit. Proceed and exit at the Long Island Expressway (I-495) exit 35 toward Midtown Tunnel. Merge onto the L.I. Expressway/I-495 exit toward Midtown Tunnel. Take the Tunnel Exit Street towards Downtown. Ramp then becomes Tunnel Exit Street. Continue on Queens Midtown Tunnel Exit/ Tunnel exit Street. Turn right onto E 34th Street. Turn left onto 9th Avenue. Turn right onto W19th Street. Turn Right onto 10th Avenue. END: 180 10th Avenue.

From Newark International Airport

Start at Newark Airport, Newark on Conrad Road. Turn right onto US-1 North/ US-9 North. Continue on US-1 North/ US-9 North. US-1 North/ US-9 North becomes 12th Street. Continue, 12th Street becomes Boyle Plz (portions toll). Continue, Boyle Plz becomes the Holland Tunnel (crossing into New York). Take Exit 1 toward RT-9A/ West Street. Turn Slight left onto Laight Street. Turn Right onto West Street/NY-9A N/West Side Highway. Continue to follow NY-9A N/ West Side Highway. Take the 10th Avenue ramp. Turn slight left onto 10th Avenue. END: 180 10th Avenue.

From Philadelphia, Pennsylvania

Begin on I-95 N/ New Jersey Turnpike N towards Cars/Trucks-buses (portions toll). Merge onto I-78 E/ New Jersey Turnpike Exit E via Exit 14 toward 14A-14B-14C/ Bayonne/ Jersey City/ Holland Tunnel (portions toll). Turn slight right onto 12th Street. 12th Street becomes Boyle Plz (portions toll). Boyle Plz becomes Holland Tunnel (crossing into New York). Take Exit 1 toward RT-9A/ West Street. Turn slight left onto Laight Street. Turn Right onto West Street/NY-9A N/West Side Highway. Continue to follow NY-9A N/ West Side Highway. Take the 10th Avenue ramp. Turn slight left onto 10th Avenue. END: 180 10th Avenue.

From Connecticut

Begin on I-84 W. Then merge onto I-684 S via exit 20 towards White Plains/ New York City (passing through Connecticut – then crossing into New York). Keep Left to take I-684 S via Exit 1 toward Whitestone BR. I-684 S becomes Hutchinson River Parkway South. Keep left to take Cross Country Parkway W via Exit 15 toward the George Washington Bridge. Take the Saw Mill Parkway S/ Saw Mill River Parkway South via the exit on the left. Saw Mill Parkway/ Saw Mill River Parkway S becomes Henry Hudson Parkway (portions toll). Henry Hudson Parkway becomes NY-9A S/ West Side Highway. Turn left onto W 18th Street. Turn left onto 10th Avenue. END: 180 10th Avenue.

SUGGESTED ACCOMODATIONS

Conference participants are responsible for booking their own accommodations.

Desmond Tutu Center*
180 10th Avenue (between 20-21st Streets)
New York, NY 10011
+1-877-4TUTUNY or 646-717-9717
**Mention AngelAfrica Enterprise Conference for a reduced rate*

Comfort Inn Manhattan
42 W 35th Street
New York City, NY 10001
+1-212-947-0200

Inn on 23rd
131 W 23rd Street
New York City, NY 10011
+1-877-387-2323

Holiday Inn Express Madison Square Garden
232 W 29th Street
New York City, NY 10001
+1-800-315-2621



AngelAfrica is a nonprofit organization whose mission is to build the largest network of business and professional leaders dedicated to promoting economic growth in Africa by leveraging our collective talent to encourage entrepreneurship and private sector development and initiatives.

www.angelafrica.org